

EN - MOUNTING AND SAFETY INSTRUCTIONS

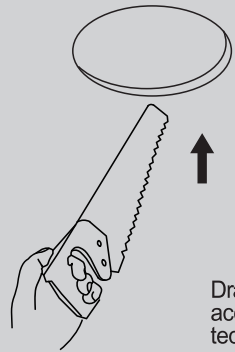
Read carefully the instructions and keep them for maintenance operations.

WARNINGS!

1. We recommend that the installation of this light fitting to be performed by technical professional personnel.
2. Don't switch on the electricity before the complete installation of the light fitting, according to the mounting instructions.
3. These light fittings can be installed only in the interior of a building.
4. Do not install the light fitting in the humid areas and the areas of corrosive agents.

5. Make sure where the light fitting is mounted allow further access for maintenance operations.
6. Clean this light fitting only with a soft dry cloth and only after switching off the power supply.
7. Do not use any chemical or abrasive cleaners.

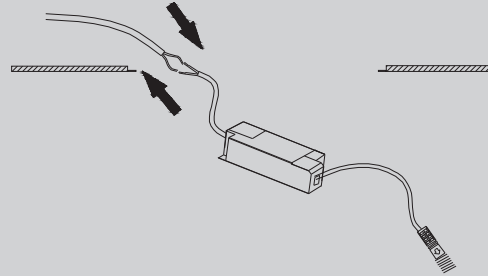
FIG.1



Cut out:
Ø 70 mm

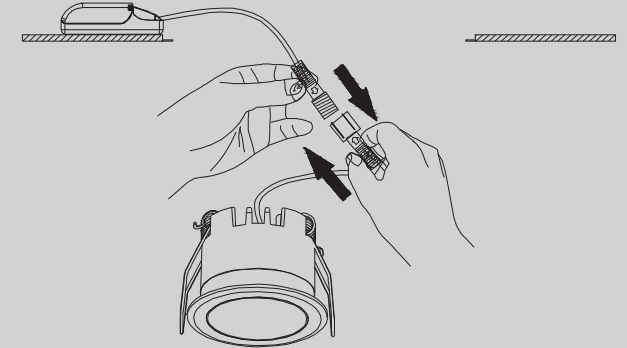
Draw and execute the recessed hole according to the dimensions from the technical data table

FIG.2



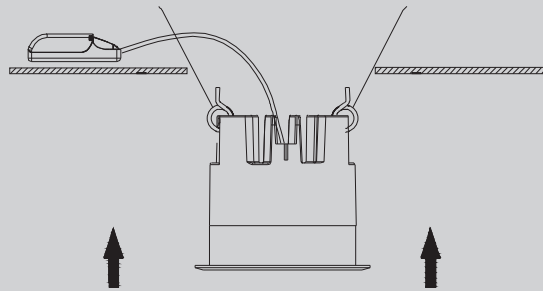
Connect driver to power supply.

FIG.3



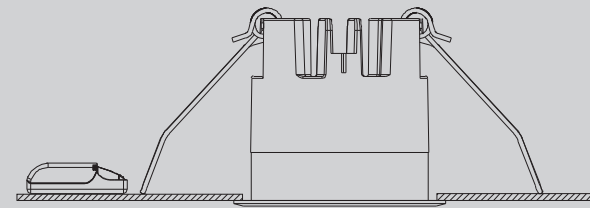
Connect driver with fixture.

FIG.4



Install the light fitting in the ceiling and fix it in the safety clamps

FIG.5



Installation completed.

Smaltimento

